

Better generalisation needed!!
The most important map topic just now.



Christer Carlsson, Swedish Map Commission.
Göteborg 2006 (Kiev 2007)

Who agrees on that?

- IOF?
- The Nordic countries
- SOFT (Swedish Orienteering Fed.)
- The club cashiers
- The runners?
- The map makers?

What shall rule the contents of the map?

- ISOM (IOF and Swedish are the same)
- The terrain (minimum sizes are valid for terrain with less details)

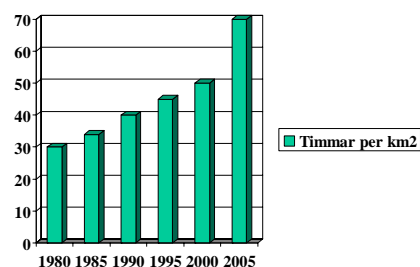
What shall NOT rule the contents of the map?

- Personal ideas.
- Mapmakers who want to show how skilled they are.
- Course setters who want to use the smallest details.
- Bad influences from other countries.

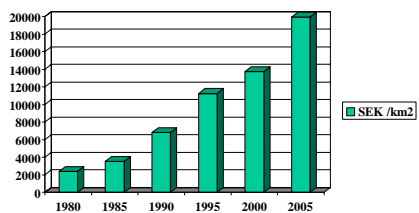
What will bad generalisation lead to?

- Maps difficult to read.
- Demands for bigger scale.
- More expensive mapmaking.
- Smaller map areas.
- Lower standard of the courses.

The development of time for field work in SW Sweden



The development of costs for field work in SW Sweden

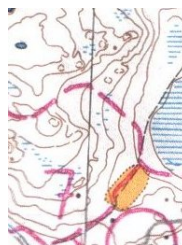


Development of contribution from state and counties



How have the maps changed?

Ex1



Club mapmaker 1974



Professional Mapmaker 1986



Professional mapmaker 2003

How have the maps changed?

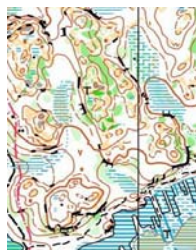
Ex2



Professional mapmaker 1978



Professional mapmaker 1989



Professional mapmaker 2004

How have the maps changed?

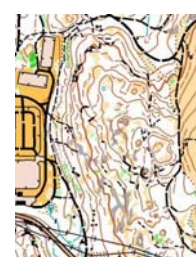
Ex3



Professional mapmaker 1982



Club mapmaker 1995

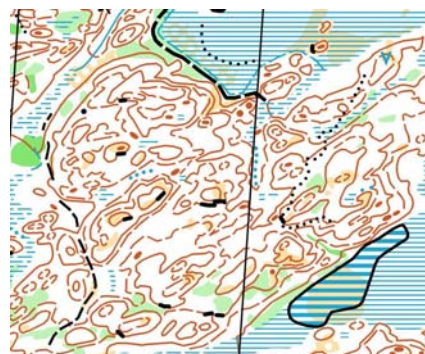


Professional mapmaker 2004

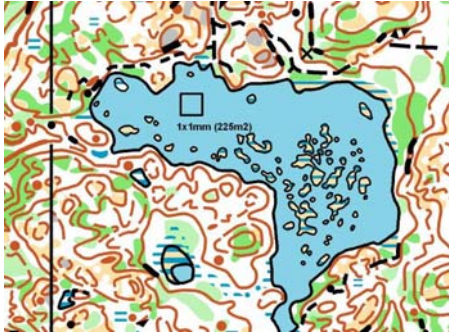
The most important causes for "hard to read" maps



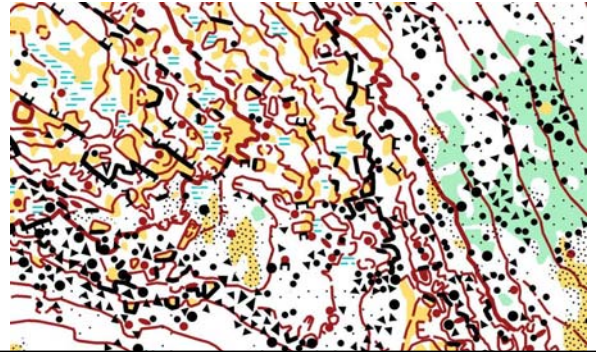
To much form lines



Bad generalisation of green
yellow and grey



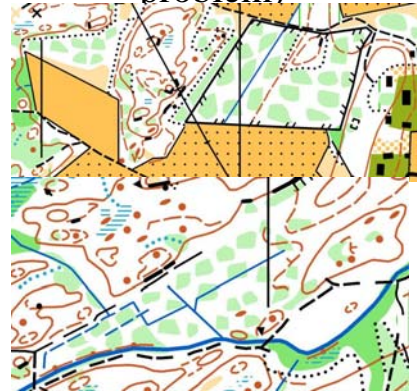
Bad generalisation of
boulders, cliffs, and rocks



To much use of distinct
vegetation boundaries



"Flummgrönt" (Swedish
problem)



Tags on passable rock face



Overambitious "planbild"



Mixture of grey and yellow



What problem gives a over detailed map to the runner?

- Hard to see the big structure of the terrain.
- Hard to read ,demands perfect vision and weather
- The runner sees more problems than necessary.

